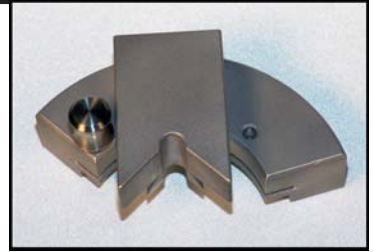


THE CUBE SQUARED (CUBE²)

from Q-Mark Manufacturing Inc.

patent pending

In one minute or less, the new Cube² squares VAST and VAST-XT adapter plate cubes to the CMM axes.



Q-Mark's new Cube²

Here's how it works:

1) Loosen the adapter plate screws to allow the cube to rotate (figures 1 & 2).



Figure 1



Figure 2

2) Align the slots in the plate with the pins in the Cube². Slide in the adapter plate (figure 3). Push down to engage the locking pin (figure 4).



Figure 3



Figure 4

3) Slide the v-block against a corner of the cube (figure 5). Hold the v-block against the cube (figure 6).



Figure 5



Figure 6

NEW!

Q-Mark part number QM-C2
see reverse for ordering information



4) Turn the Cube² over (figure 7) and tighten the adapter plate screws (figure 8).



Figure 7



Figure 8

5) Remove the adapter plate by first retracting the v-block (figure 9), then pull up on the locking pin to release (figure 10).



Figure 9



Figure 10

6) Slide out the adapter plate (figure 11). Done! No other tools needed.



Figure 11

The Cube² squares the adapter plate cube to the CMM. It's fast, accurate, and unconditionally guaranteed. Made in USA.

Part no. QM-C2
cost \$260.00

Q-Mark Manufacturing Inc.

23332 Madero Ste D

Mission Viejo CA 92691 USA

Phone: 1-800-776-2388 or 1-949-457-1913

Email: sales@cmms.com

www.cmms.com



Cube² patent pending